

METERING RANGE



2018 | 2019

INTRO DUCTION

Cobra is an iconic South African brand with a history of more than 60 years in the supply and manufacturing of plumbers' brassware in the country. Our technical range of products are designed and engineered to perform to perfection and provide a care free installation to the Plumber and DIY enthusiast.

Our products are manufactured in South Africa using top of the range, latest technology in our world class facilities. In order to ensure we remain renowned for our quality and durability, we use the highest quality materials suitable to outlast harsh water and environmental conditions. Now 100% owned by LIXIL, we have access to the knowledge, capabilities and product platforms of the biggest and most innovative sanitary ware company in the world. This, combined with a wealth of local industry knowledge, experience and skills, will ensure we continue to make a significant impact in the industry.

We are entering into a new era for Cobra. It is one which promises innovative new products for both the professional and end user, ensuring we remain the brand you trust.

I would like to take this opportunity to thank all our customers, who have played an integral role in building our brand and look forward to continuing our success story with you.

Yours sincerely
Natie van der Westhuizen
Chief Operations Officer, LIXIL Africa

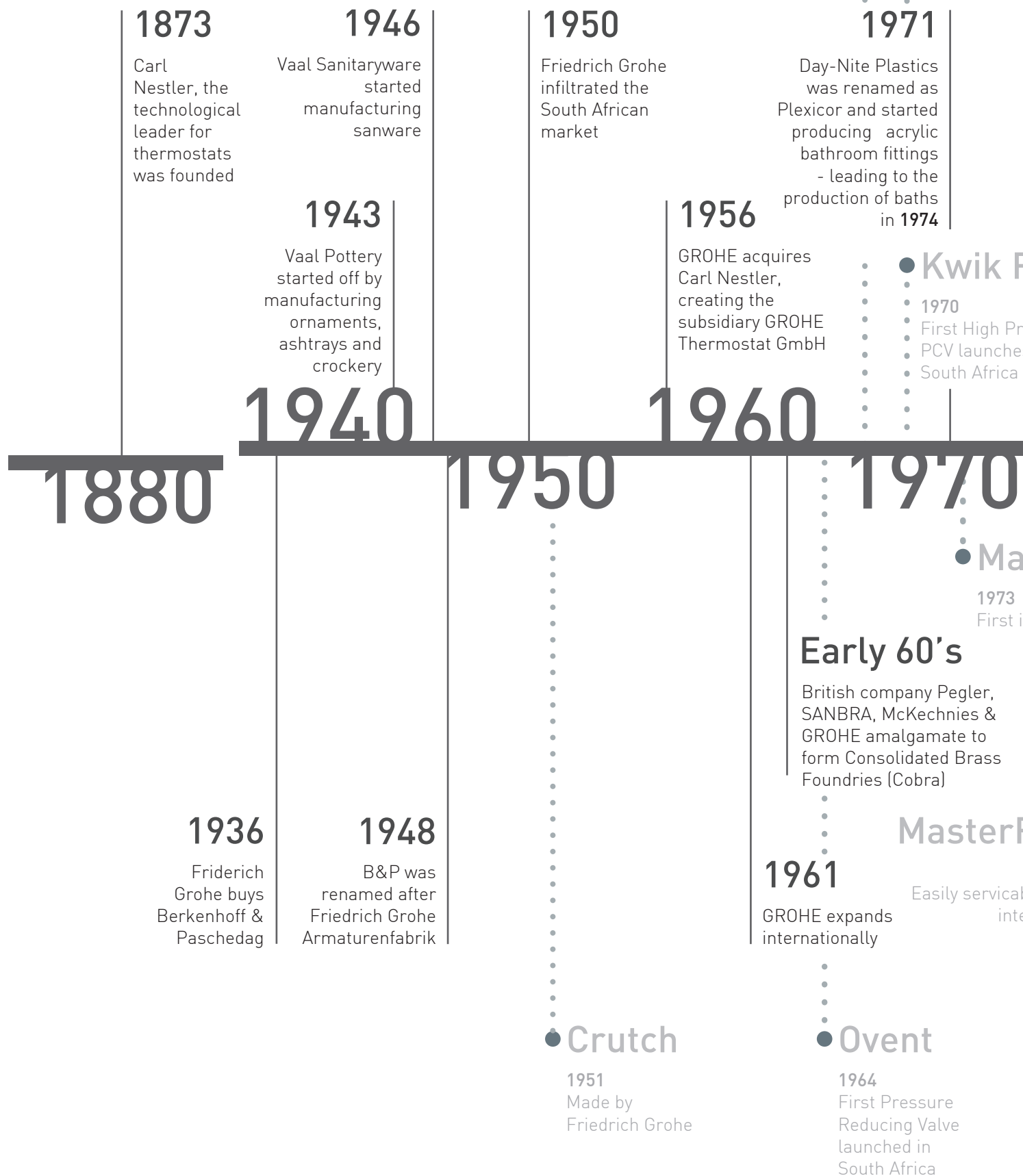
ABOUT US

Cobra is the tried-and-tested, much-loved South African brand that plumbers and plumbing merchants rely on for its extensive range of plumbing hardware. The comprehensive range includes compression fittings, wastes and traps, flush valves and pressure control valves amongst others.

With over 60 years of expertise, we have made a name for ourselves as the market leader in plumbing fittings. This, along with our unwavering commitment to produce the best quality products that adhere to the highest independent standards, ensures that our products boast state-of-the-art global appeal.

Cobra is truly a South African icon that continues to leave a lasting impression.

ORGANISATIONAL TIMELINE



we
replaces
CV

Flow

essure
s in

sterFlo I

online and integral PCV

Flo II

1976
ole inline
egral PCV

XTS PCV

1980
Expansion tank replaces
overflow port

MasterFlo I Compression Model

1991
Suitable for emerging
copper pipe market

1979

Libra began
manufacturing
bathroom
products in
Cape Town

1982

The GROHE
plant in
Edelburg,
Hemer opens

1991

GROHE
goes public
and buys
Eichelberg

1992

Vaal Sanitaryware buys
out Cobra Bathrooms
(Pty) Ltd.

2015

LIXIL takes over
management
of GROHE
Dawn Water
Technology

1986

Castle Watertech
and Cobra Brassware
consolidated to become
Cobra Watertech

1980

Isca was
created by Yigal
Yaretzkey and
Avi Schacher

2014

GROHE
Dawn Water
Technology was
formed

2017

LIXIL wholly
acquires GROHE
Dawn Water
Technology

Cobratron

2001
First Cobra
electronic
mixer

1980

1990

2000

2010

2020





WHY COBRA

- Established in 1954 by Frederick Grohe – 63 years of local experience & expertise.
- Our factory quality management systems are ISO 9001 certified.
- We hold permits to apply the SABS mark to products covered by the following South African National Standards.*
- Eco-friendly manufacturing plant.
- Providing jobs for 1 700 employees.
- 10 years genuine warranty support.
- National after-sales service support by qualified plumbers (on-site repair or replacement within 48 hours). Local call centre 0861 21 21 21.
- Recipients of the 2016 Customer Service Award of the Year from SEIFSA (Steel & Engineering Industries Federation of South Africa).
- Made in RSA & developed for African conditions ensuring product longevity against the presence of lead & nickel (DZR brass).
- Spares & parts widely available.
- Backing of two global giants (GROHE & LIXIL).
- Our products come standard with water saving technology.
- Local marketing support & investment to drive sell-through (promoters, activations etc.).
- Local training support for your teams.
- Tried & quality-proven local exclusive ranges on offer.
- Our products have a global footprint.

*SANS Standards

SANS 198
SANS 226 classes 1 and 2

SANS 752
SANS 776
SANS 1056
SANS 1067- Part 1
SANS 1067- Part II
SANS 1240
SANS 1480
SANS 1808 – 9
SANS 1808 – 10
SANS 1808 – 53
SANS 1808 – 58
SANS 1808 – 66
SANS 21003 Cobra

Functional control and safety valves
Screw-down taps and mixers, basin, bath and shower sets
Float valves
Gate valves
Ball cocks
Compression fittings
Capillary fittings
Automatic shut-off valves
Single lever mixers
Metering taps
Spring-loaded check valves
Drain cocks
In-line strainers
Demand taps
Multilayer Piping Systems for hot and cold water-installations inside buildings; pipes (MLP).

OUR EXPERTISE

Customer Service and Spares

At Cobra, we are renowned for our after-sales service and availability of spares, affording our customers peace of mind. Our service team was recipient of the 2016 Customer Service Award of the Year from the Steel & Engineering Industries Federation of South Africa (SEIFSA). Our dedicated national after-sales service number (0861 21 21 21) enables customers to speak directly to a service consultant for over-the-phone advice or to book a service call for a consultant to personally visit the site in question. We are committed to attending to our customers' calls within 24 hours.

Quality/Certifications

Quality remains one of the key pillars of continuous improvement. At Cobra, our people are continually coached to ensure they adhere to our quality principles and observe correct procedures.

Our quality management systems at our manufacturing facilities in Krugersdorp and Springs are SABS ISO 9001 certified.

Our technical products are produced and tested to meet in-house standards. Where there is a South African standard in place, such as the South Africa National Standard (SANS) by the South Africa Bureau of Standards (SABS), our products are tested and certified to ensure they conform.

Selected Cobra products are also Joint Acceptance Scheme for Water Installation Components (Jaswic) approved and listed, which means they are accepted for use by municipal bodies.



A background image of a factory worker wearing a welding mask and gloves, working on a lathe machine. The worker is wearing a dark blue shirt with an orange collar. The machine has a control panel with a dial and buttons. In the foreground, there are several brass fittings.

STATE OF THE ART FACILITIES

Our Factories

With ongoing investment into our factories, we will continue to produce world-class products using the latest plant equipment and technologies.

This improved efficiency allows Cobra to stay consistently abreast of international trends.

Water Saving

Cobra offers an extensive range of water saving products that are sophisticated in both design and function. This includes electronic taps and mixers, metered and demand taps, water saving shower heads, pressure reducing valves and toilet flush mechanisms.

Our research teams constantly investigate ways in which to improve the water efficiency of our products and we often develop specific technologies to complement the existing systems where critical consumption management is required.

AERATORS



A major function of Cobra aerators is anti-splash. The increased surface area of aerated water ensures this by breaking down the surface tension of the water stream. This results in a dramatic decrease of splashing, keeping tiles dry and cupboards under basins free of mould.

Aerators save water. Air bubbles in the stream displace water and a tap fitted with an aerator delivers less water on full flow than the same tap with the aerator removed. In addition, the reduced water usage of aerated taps means energy is saved when producing hot water.

Cobra aerators also control stream straightness and diameter and meet the requirements of European standard EN 246. Their noise level is less than 15 db (A) at 3 bar (43.5 PSI).

Lime build-up in and on aerators reduces air intake and water outlet, thereby reducing aeration, resulting in splashing and loss of water stream shape. Lime build-up also supports the growth of bacteria. Cobra aerators are manufactured from a polymer that resists lime build-up.

GLOSSARY + GUIDELINE TABLE

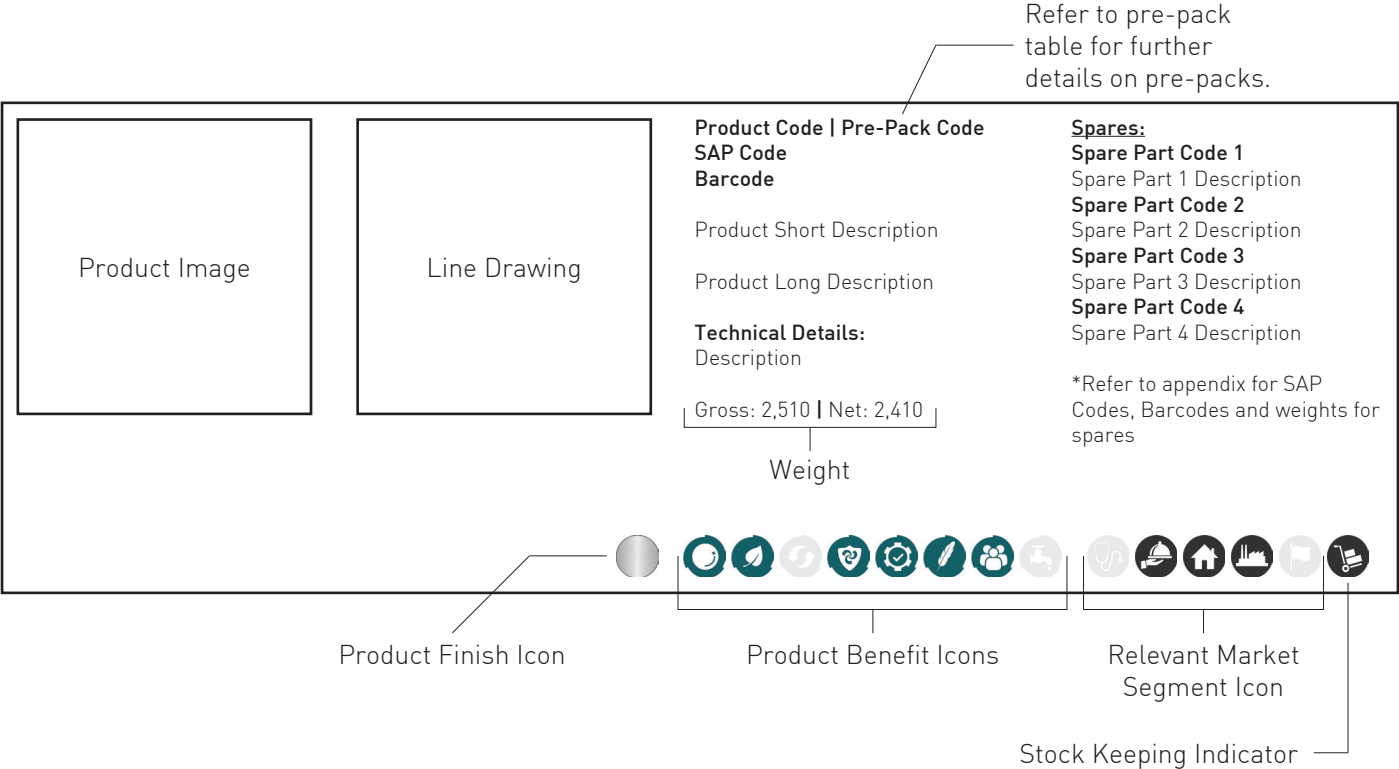


Products bearing this mark have met all requirements of the relevant South African National Standards (SANS) standard and have been certified by the South African Bureau of Standards (SABS).



Products bearing this mark were manufactured and/or assembled in manufacturing facilities where the quality management systems have been SABS ISO 9001 certified.

How to read the product catalogue:



Product Finish:

- Chrome**
- Rough chrome**
- White**
- Brass**
- Black**

Some of our Cobra Technical products are finished with our Cobra PureShine chrome finish. SANS requires a chrome plate thickness of 0.3 microns (µm) to reduce wear on the product. Cobra chrome plating exceeds this with an average thickness of 0.44µm, while the electroplated nickel substrate on our products exceeds the statutory 12µm with an average of 13.75µm.

Ultimately, users can be assured that Cobra chrome plated products offer superior wear resistance. The below icons indicate the colour of the corresponding product in the catalogue section of this book.

Product Features and Benefits:

Cobra products are produced to offer maximum added value to customers. The figure below shows the various features and benefits of our product portfolio.

In the catalogue section of this book, the features attributed to each product are denoted by the relevant icon.



PureShine

Durable chrome surfaces protect the products from scratches, are resistant to dirt and easy to maintain.



EcoMind

Save precious resources with water-saving technology.

Flow restrictors supplied with Cobra taps and mixers can be easily serviced by home owners. The restrictors are pressure compensating, meaning the stipulated flow will not be exceeded, regardless of inlet pressure.



EasySwitch

For a fresh look, change out the head of your tap without changing the body.

The handle assembly can be removed from Cobra screw down type taps. Depending on the type of headpart used in the tap (½" light pattern, ½" heavy pattern or ¾"), various designs of Cobra handle assemblies can be used to replace the old design.



Dezincification resistant brass (DR/DZR brass)

Dezincification relates to the corrosion of brass. The minimisation of this is a critical aspect of the quality (fitness for purpose) of plumbing fittings that come into contact with water. The risk and rate of dezincification increases with water hardness and the acidity or alkalinity of water (away from a PH of 7).

Dezincification-resistant brass, or DZR/DR brass, is brass that is characterised by exceptional resistance to this type of corrosion. The resistance is achieved by adherence to exacting specifications for chemical composition and careful process controls. All DZR brass must pass an ISO 6509 dezincification resistance laboratory test.

In South Africa, the use of DZR brass for components of brass plumber's fittings come into contact with water is national law. Building inspectors are being trained to demand the removal of plumber's brassware that does not conform to statutory law.



FeatherTouch

The lightest of touches is required for effortless opening and closing of the single lever mixer.



TeamAssist

Trained and dedicated service teams are in place to provide support pre and post installation.



Cobra Genuine

Genuine spare parts are locally made and readily available.



Low Water Pressure

Suitable for use in environments with low water pressure.

Product Market Segments:

Cobra products are produced to satisfy the needs of a variety of market segments or project types. The below shows the various market segments serviced by the Cobra product portfolio.

In the catalogue section of this book, the appropriate market segments attributed to each product are denoted by the relevant icon.



Health Facilities

This segment includes public and private hospitals, clinics, frail care facilities, veterinary hospitals and doctors' rooms.



Residential

This includes high, medium and entry-level housing.



Government

This segment includes the Department of Public Works and Department of Correctional Services; South African Police Services; Departments of Human Settlements, Health, Basic Education; Department of Higher Education and Training; Department of Defence; Department of Rural Development; South African Revenue Services; Department of Sport and Recreation and the Department of Transport.



Hospitality

This segment includes hotels, guest houses, guest lodges, inns, self-catering lodges and convention centres.



Commercial or Industrial

Included in this segment is office buildings, petrol garages, warehouses, factories, shopping centres, shopping malls, retail outlets, sports facilities and distribution centres.

Stock Keeping Policy:

The LIXIL stock keeping policy differentiates between products where stock is stored in distribution centres for future sales and products that are either made, assembled or purchased according to customer order.



Stock Keeping Items

- These products have been identified as part of the brand's core range where it has proved beneficial for stock to be stored in order to fulfil orders.
- Sales forecast quantities for these items are put together monthly by the LIXIL sales team and stock is produced, assembled or ordered in advance according to these forecasts as well as any expected new business or promotional activity.
- The primary objective of this policy is quicker stock delivery times to customers as there would already be stock on hand available to be delivered.



Make to Order Items

- These products have infrequent order patterns and are not part of the brand's core ranges. Keeping stock of these items often adds complexity and higher costs to the supply chain process.
- Products and/or parts are only produced or ordered when a customer order has been received.
- Although this may add time to the expected delivery date, the cost savings we achieve by not holding stock of these items allows us to offer other benefits to customers, such as reduced pricing and marketing campaigns.

PRODUCT CARE & MAINTENANCE

Cleaning

To maintain the lustre of chrome plated surfaces simply wipe occasionally with a soft damp cloth using a mild dishwashing detergent or soap solution. Rinse, dry and buff with a soft cloth.

Warning!

Many household and industrial cleaners contain abrasives and/or harsh chemical compounds and acids. Do not use these cleaners as they may irreparably discolour, dissolve or scuff the chrome plated finish.

Avoid using abrasive cloths or scouring pads.

Maintenance

The frequency and extent of maintenance required for this product varies according to prevailing site and operational conditions. No regular maintenance is required and spare parts are available for key components.

LIXIL Africa Service Call Centre:

LIXIL Africa Service E-Mail:

LIXIL Website:

0861 21 21 21

service.africa@lixil.com

www.lixil.co.za

WARRANTY

LIXIL Africa warrants that their products will be clear of material and manufacturing defects. Appraisal of the above will be done against ruling manufacturing specifications and standards at the date of manufacture. Defective product will be repaired or exchanged at LIXIL Africa's sole discretion. LIXIL Africa shall not be liable for indirect or consequential loss or damage.

THE WARRANTY WILL BE VOIDED UNDER THE FOLLOWING CONDITIONS:

- Products used with water pH falling outside of the guidelines set by the Department Of Water Affairs and Forestry or similar body.
- Products not installed by a registered or accredited installer.
- Products used with, or included in, installations where water temperatures are outside of the temperature range stipulated for that product, or as laid down in the standards for water supply and drainage (SANS 10252 & 10254) or an equivalent international standard.
- Products not installed according to manufacturer's installation instructions or according to valid Water Regulations and general good plumbing practice.
- Products which have failed as a result of dirt or debris in pipe-work which has not been flushed prior to the use of terminal fittings.
- Where a defect is attributable to the incorrect use or incorrect handling of the product.
- Where routine maintenance has been neglected.
- If spare parts other than the original spare parts are used during repairs or maintenance of the product.
- If damage was caused by transport by a third party transporter.
- If the surface of the product has been scratched.
- Products used or intended for display purposes.
- If consumables (e.g. filters, filter cartridges, aerators or batteries) or material subject to wear and tear (such as seals or hoses) are affected.
- If product damage is as a result of chemicals and cleaning agents, lime-scale build-up, aggressive environmental influences, or disruptions resulting in damage which are caused by freezing or lime-scale build-up.
- If the defect is caused by specific environmental circumstances (e.g. excess or negative pressure in the line, excess voltage or under voltage on the line).
- If the defect is attributable to wilful or negligent damage to the product by the user or a third party.

LIXIL Africa reserves the right to review any specific case in order to assess the validity of this warranty. LIXIL Africa may charge a discretionary service fee when called out to inspect products which are not LIXIL products or where there is an illegitimate claim.

THE WARRANTY IS VALID FOR:

- 10 years Taps & Mixers, Wastes, Capillary- and Compression fittings
- 3 years Showerheads
- 2 years Electronic Mixers components and Valves
- 2 years Valves (Geyser and Toilet)
- 10 years Cobra-Safe multi-layer pipe system (must be used with Cobra compression fittings and Cobra-Safe inserts or warranty shall be void)
- **10 years** all baths, shower trays and vanities, except Tanya, Widestar and Scarlett baths which carry a 5 year warranty
- 20 years on baths with Amazonite coating
- 10 years on all sanitaryware
- 6 months on all toilet seats supplied by Vaal Sanitaryware

MISCELLANEOUS:

This warranty shall apply in the above-mentioned scope and is subject to the above-mentioned prerequisites. Proof of purchase will be required.

This LIXIL Africa warranty is carried by LIXIL Africa. Please contact our Service Department on 0861 21 21 21 for warranty enquiries or further warranty information.

08

METERING RANGE

METERING RANGE

INTRODUCTION TO METERING & DEMAND VALVES

Special notes:

SANS 10252-1:2012, sec 6.2.3

“Unless otherwise required, ablution areas that have a battery of more than three wash-hand basins or showers shall be provided with metering or demand-type taps, or metering-type showers.”

SANS 10252-1:2012, sec 5.3.1.1

Terminal water fittings installed outside any building other than a residential dwelling, should:

1. Incorporate a self-closing device OR
2. Have a removable handle for operating purposes OR
3. Be capable of being locked to prevent unauthorized usage OR
4. Be of a demand-type that limits the quantity of water discharged in each operation.

Demand taps

Generic features and benefits:

- Excellent water saving products.
- Fitted with 316L stainless steel spindle for high use, high wear installations.
- Tap turns off immediately when the button is released; taps cannot be left running unattended.
- Can be easily installed in place of conventional taps.
- Particularly suitable for public place washrooms, caravan sites, camping sites, schools, hospitals and offices amongst others.
- Manufactured from corrosion resistant DZR brass.
- It is recommended to fit a pressure control valve and in-line strainer to demand valve installations.
- These fittings are not recommended where water pressure exceeds 200kPa.
- Should you require replacement components, even after many years, you are assured of availability of components or sub-assemblies to ensure the continued operation of your Cobra fittings.



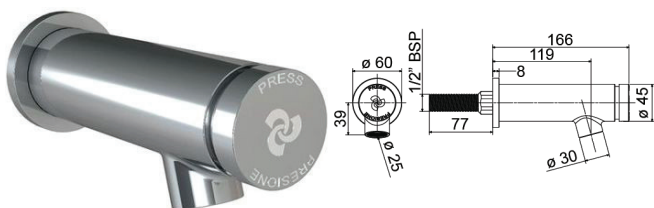
Metering taps

Generic features and benefits:

- Excellent water saving products.
- With streamlined outlet for flow aesthetics.
- Can be easily installed in place of conventional taps.
- Cycle time can be adjusted on site.
- With non-hold open feature – cannot be MADE to waste water.
- Integral flow controller ensures a constant flow rate from the valve irrespective of fluctuations in supply pressure.
- The reduced flow rate enables smaller supply pipes to be used with a subsequent saving in installation material costs.
- All the working parts in a Cobra metering valve are contained in one easily removable cartridge which makes for simple servicing.
- The mechanism in this valve is pressure balanced so the effort required to activate the valve remains constant irrespective of the supply water pressure.
- Pressure balanced valves do not have the tendency to cause water hammer.
- Manufactured from corrosion resistant DZR brass.
- Should you require replacement components, even after many years, you are assured of availability of components or sub-assemblies to ensure the continued operation of your Cobra fittings.



METERING RANGE



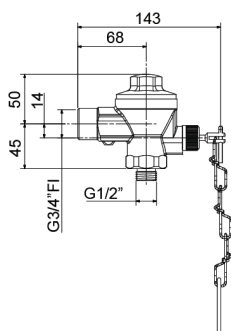
KM066WT-114
FSPT21MT-0GT0157
6002194123255

Metering spout

Wall type. Non hold open, self closing. With wall flange and flow controller. 1/2" BSP male iron connection end.

Technical Details:
Flow cycle 1-20 seconds

Gross: 1,270 | Net: 1,213

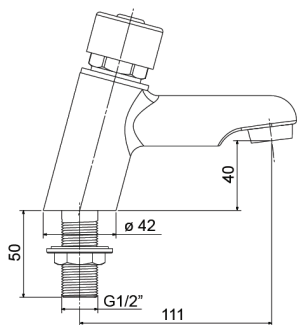


KM1-00
FFUUSXMT-0GT0160
6002194021742

Metering valve

Flow control valve exposed metermaster. Non hold open, self closing. With integral ball-o-stop inlet, outlet flow controller and pull chain. 1/2" BSP male iron outlet and 3/4" BSP female iron connection end.

Gross: 1,100 | Net: 1,051



KM2-100
FPT2A1MT-0GT0052
6002194021759

Metering pillar tap

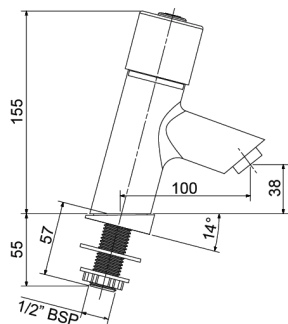
Non hold open, self closing.
1/2" BSP male iron connection end.

Technical Details:
Flow cycle 1-20 seconds

Gross: 1,140 | Net: 1,089

Spares:
C-KM9-290
 Cartridge repair kit
C-KM9-200
 Cartridge assembly





KM2-100FS
FPT1MTMT-0GT0110
6002194072171

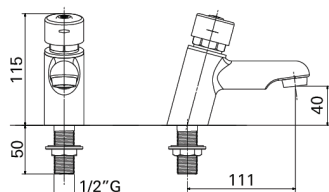
Metering pillar tap

Non hold open, self closing.
 1/2" BSP male iron connection end.

Technical Details:
 Flow cycle 1-20 seconds

Gross: 1,880 | Net: 1,805

Spares:
C-KM9-290
 Cartridge repair kit
C-KM9-200
 Cartridge assembly
C-M24X1
 Aerator



KM2-101
FPT2A1M2-0GT0052
6002194021766

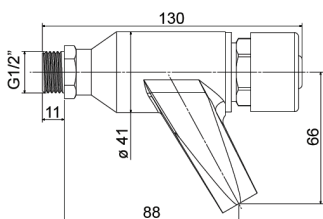
Metering pillar tap

Non hold open, self closing.
 1/2" BSP male iron connection end.

Technical Details:
 Flow cycle 1-20 seconds

Gross: 1,055 | Net: 1,008

Spares:
C-KM9-290
 Cartridge repair kit
C-KM9-200
 Cartridge assembly



KM2-200
FBBAN1MT-0GT0052
6002194021797

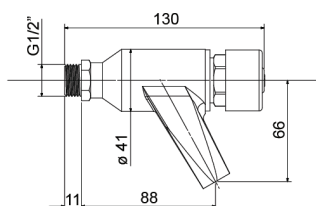
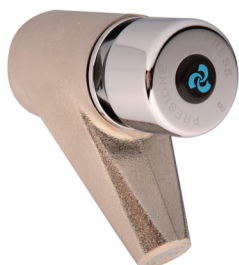
Metering bib tap

Non hold open, self closing.
 1/2" BSP male iron connection end.

Technical Details:
 Flow cycle 1-20 seconds

Gross: 0,967 | Net: 0,919

Spares:
C-KM9-290
 Cartridge repair kit
C-KM9-200
 Cartridge assembly



KM2-201
FBBAN1MT-7FT0052
6002194021803

Metering bib tap

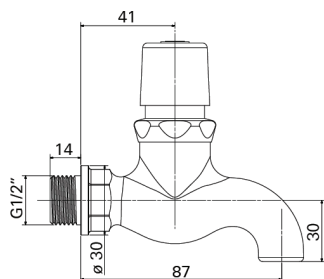
Non hold open, self closing.
 1/2" BSP male iron connection end.

Technical Details:
 Flow cycle 1-20 seconds

Gross: 0,967 | Net: 0,919

Spares:
C-KM9-290
 Cartridge repair kit
C-KM9-200
 Cartridge assembly





KM2-202-15
FBBAN1DT-0GT0049
6002194047513

Demand bib tap

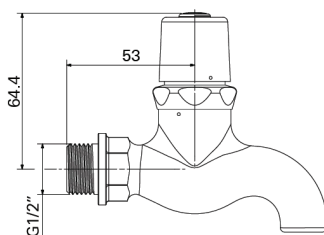
Demand bib tap, chrome plated.
 Includes: pushbutton, hot and cold
 indices, and 1/2" BSP male inlet.
 An excellent water-saving product.
 SANS 1808-66.

Gross: 0,438 | Net: 0,412



Spares:

S-KM9-201R
 Demand headpart, 1/2", red,
 chrome-plated
S-KM9-201B
 Demand headpart, 1/2", blue,
 chrome-plated.



KM2-203-15
FBBAN1DT-7FT0049
6002194047537

Demand bib tap

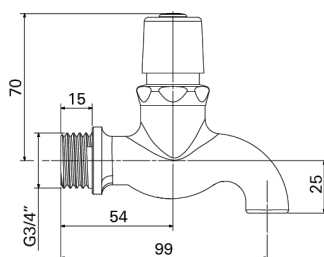
Demand bib tap, rough brass.
 Includes: pushbutton, hot and cold
 indices, and 1/2" BSP male inlet.
 An excellent water-saving product.
 SANS 1808-66.

Gross: 0,480 | Net: 0,452



Spares:

S-KM9-201R
 Demand headpart, 1/2", red, rough
 brass
S-KM9-201B
 Demand headpart, 1/2", blue, rough
 brass



KM2-203-20
FBBAN2MT-7FT0049
6002194047544

Demand bib tap

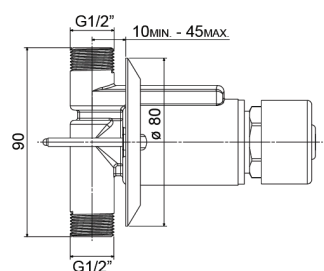
Demand bib tap, rough brass.
 Includes: pushbutton, hot and cold
 indices, and 1/2" BSP male inlet.
 An excellent water-saving product.
 SANS 1808-66.

Gross: 0,506 | Net: 0,481



Spares:

S-KM9-201R
 Demand headpart, 1/2", red, rough
 brass
S-KM9-201B
 Demand headpart, 1/2", blue, rough
 brass



KM2-301
FSTAX1MT-0GT0052
6002194021896

Metering stop tap

Non hold open, self closing. With
 stainless steel wall flange. 1/2" BSP
 male iron connection ends.

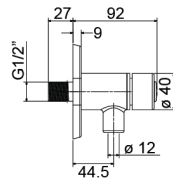
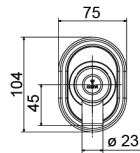
Technical Details:
 Flow cycle 1-20 seconds

Gross: 1,200 | Net: 1,146



Spares:

C-KM9-290
 Cartridge repair kit
C-KM9-200
 Cartridge assembly



KM6-000
FFU1SUM2-0GT0176
6002194081104

Metering urinal valve

Non hold open, self closing.
 1/2" BSP male iron connection end.

Technical Details:
 Flow cycle 1-20 seconds

Gross: 0,916 | Net: 0,871

Spares:
C-KM9-290
 Cartridge repair kit
C-KM9-200
 Cartridge assembly



METERING & DEMANDS VALVES:

National Standards and Flow Rates

Special notes:

SANS 10252-1:2012, sec 6.2.3

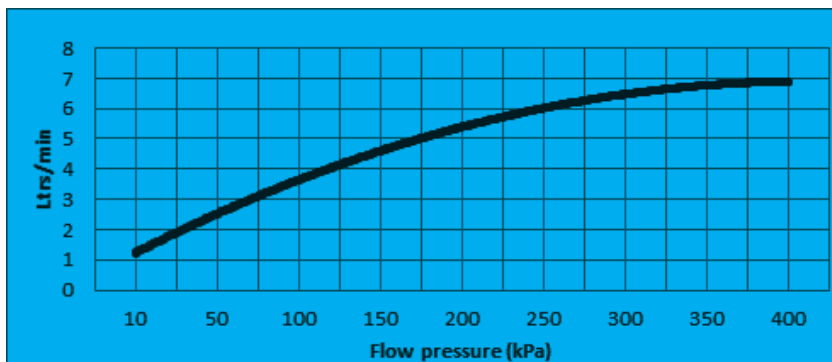
“Unless otherwise required, ablution areas that have a battery of more than three wash-hand basins or showers shall be provided with metering or demand-type taps, or metering-type showers.”

SANS 10252-1:2012, sec 5.3.1.1

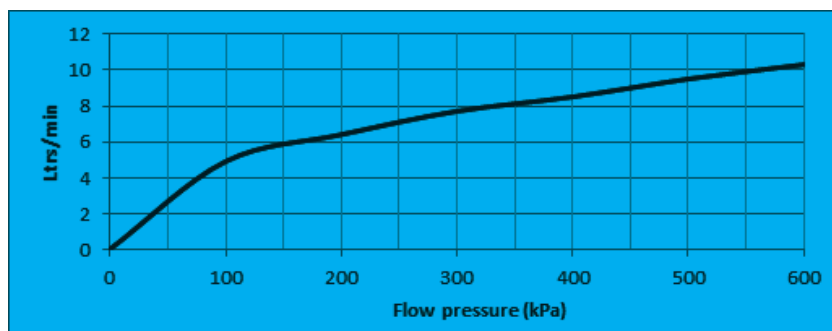
Terminal water fittings installed outside any building other than a residential dwelling, should:

1. Incorporate a self-closing device OR
2. Have a removable handle for operating purposes OR
3. Be capable of being locked to prevent unauthorized usage OR
4. Be of a demand-type that limits the quantity of water discharged in each operation.

Demand tap flow rate graph



Metering tap flow rate graph



20 Wright Street,
Factoria,
Krugersdorp, 1739
South Africa

National After Sales Service Number: +27 (0) 861 21 21 21

ONLINE PLATFORMS

Visit our websites and find an office/dealer/distributor closest to you.

Websites:

<http://www.lixil.co.za/>

Social Media:



- @Cobrataps



- @CobraWatertechSA

Cobra has a policy of continuous product development and advancements and therefore reserves the right to modify product specifications accordingly.



PART OF **LIXIL**