
COBRA & VAAL
MEDICAL CATALOGUE



PART OF **LIXIL**

TABLE OF CONTENTS

01	MEDICAL RANGE	01
	Quarter Turn Medical Range	04
	Single Lever Medical Range	09
02	HOSPITAL & LABORATORY	13
	HygiaBoxed C/W fittings	15
	Sola 510	15
	Sola 630	16
	Lab sink 450	16
	Lab sink 600	17
	Drip sink	17
	Slophopper	18

MEDICAL RANGE

Medical

01

MEDICAL RANGE

Quarter Turn Medical Range
Single Lever Medical Range

01

04

09

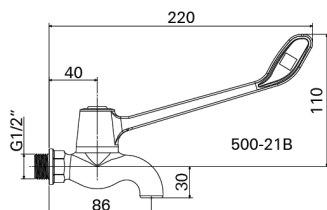
INTRODUCTION TO COBRA MEDICAL MIXERS

For use in medical applications.

FEATURES AND BENEFITS:

- Clockwise and anti-clockwise closing mechanism
A ¼ turn ceramic disk head part facilitates the opening and closing of bb taps, pillar taps and side valves with a ¼ turn action.
- Aerated flow restrictors
All basin aerated taps and mixers come standard with a 5 litre/minute flow restrictor, facilitating water saving and supporting green building requirements.
- Spares
Should you require spares, even for older Cobra models, you are assured the availability of such componentry and sub-assemblies since Cobra retains spares for models as sold for 20 years. This ensures the continued operation of your existing Cobra fittings.
- Dry outlet design
Designed as a feature specific to the horizontal outlets in the medical range, this design ensures that all water remaining in the tap chamber runs from the outlet, thus eliminating the growth of bacteria.
- Operating handle
Angled away from the spout, the 180mm long handle ensures ease of use, particularly for users with limited mobility since the handle can be operated with both elbow and forearm. The handle has no sharp edges, eliminating any threat of injury.
- Progressive cartridge
This mechanism reduces the wastage of hot water when compared with traditional single lever cartridges.
When the spindle is turned clockwise, it opens the full volume flow of cold water. Turning the spindles further activates the mixing process by adding hot water. At the end of the turning area, only hot water flows.
This feature is specific to the basin mixers as well as the wall and pillar type mixers.
- S-connections with integrated shut off valve
The new and improved S-connections for the wall type mixers incorporate two unique features, namely:
 - An integrated isolating ball valve
 - An integrated stainless steel mesh filter/strainerThe integrated isolating ball valve enables the maintenance team to shut off water supply at the S-connector where it enters the wall type mixer. No need to shut off the water supply to the whole building.
The stainless steel mesh filter/strainer serves as "double protection" for the cartridge and functional components of the mixer (as it is best practice to install an in-line strainer on the supply line of the water reticulation as well).
The strainer will capture possible debris in the water supply or pipe work and features a 550p mesh strainer.
It furthermore allows on site adjustment of the maximum allowed blend of hot and cold water.
- All items are chrome plated, ideal for sterile environments.
- The Cobra medical ranges are listed with the Joint Acceptance Scheme for Water Service Installation Components (JASWIC).

QUARTER TURN MEDICAL RANGE



500-21B
FEABIBEA-4FT0050
6002194030256

Medical bib tap

Elbow action. With 1/4 turn ceramic disc head part and blue indice for cold water application. 1/2" BSP male iron connection end.

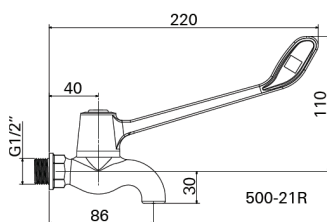
Gross: 0,614 | Net: 0,584

Spares:

S-21-CLOCK
Blue head part complete
S-21-1CLOCK
Blue head part only



Medical



500-21R
FEABIBEA-5JT0050
6002194030263

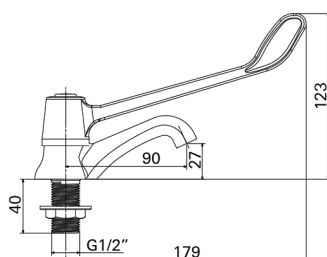
Medical bib tap

Elbow action. With 1/4 turn ceramic disc head part and red indice for hot water application. 1/2" BSP male iron connection end.

Gross: 1,000 | Net: 0,955

Spares:

S-21-ANTI
Red head part complete
S-21-2ANTI
Red head part only



503-21B
FEAPIEA-4FT0050
6002194030270

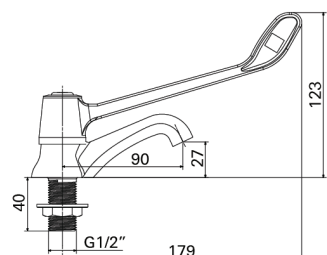
Medical pillar tap

Elbow action. With 1/4 turn ceramic disc head part, flanged backnut and blue indice for cold water application. 1/2" BSP male iron connection end.

Gross: 0,620 | Net: 0,589

Spares:

S-21-CLOCK
Blue head part complete
S-21-1CLOCK
Blue head part only
088-15
Connection backnut



503-21R
FEAPIEA-5JT0050
6002194030287

Medical pillar tap

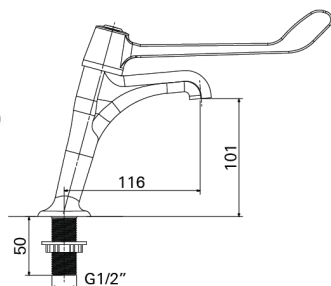
Elbow action. With 1/4 turn ceramic disc head part, flanged backnut and red indice for hot water application. 1/2" BSP male iron connection end.

Gross: 0,600 | Net: 0,570

Spares:

S-21-ANTI
Red head part complete
S-21-2ANTI
Red head part only
088-15
Connection backnut





504-21B
FEAPLREA-4FT0050
6002194030294

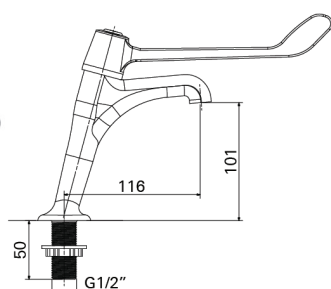
Medical pillar tap

Elbow action. High waist, with 1/4 turn ceramic disc head part and flanged backnut. Blue indice for cold water application. 1/2" BSP male iron connection end.

Gross: 0,900 | Net: 0,855

Spares:

S-21-CLOCK
 Blue head part complete
S-21-1CLOCK
 Blue head part only
088-15
 Connection backnut



504-21R
FEAPLREA-5JT0050
6002194030300

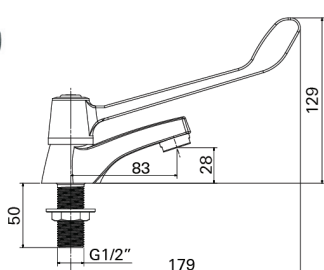
Medical pillar tap

Elbow action. High waist, with 1/4 turn ceramic disc head part and flanged backnut. red indice for hot water application. 1/2" BSP male iron connection end.

Gross: 2,100 | Net: 2,016

Spares:

S-21-ANTI
 Red head part complete
S-21-2ANTI
 Red head part only
088-15
 Connection backnut



505-21B
FEAPLQEA-4FT0050
6002194030317

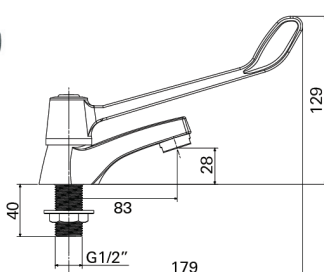
Medical pillar tap

Elbow action. Square pattern, with 1/4 turn ceramic disc head part and flanged backnut. Blue indice for cold water application. 1/2" BSP male iron connection end.

Gross: 0,825 | Net: 0,784

Spares:

S-21-CLOCK
 Blue head part complete
S-21-1CLOCK
 Blue head part only
088-15
 Connection backnut
C-M24X1
 Aerator



505-21R
FEAPLQEA-5JT0050
6002194030324

Medical pillar tap

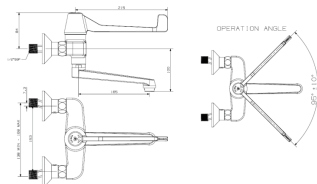
Elbow action. Square pattern, with 1/4 turn ceramic disc head part and flanged backnut. red indice for hot water application. 1/2" BSP male iron connection end.

Gross: 0,680 | Net: 0,646

Spares:

S-21-ANTI
 Red head part complete
S-21-2ANTI
 Red head part only
088-15
 Connection backnut
C-M24X1
 Aerator





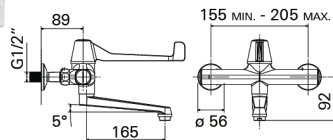
507
FEAWALOM-0GT000383
6002194000686

Medical mixer

Medical elbow-action, progressive control, wall-type mixer, chrome plated. Includes: 1/2" BSP male inlets, aerated underarm swivel outlet (dry spout), and concealed s-connections with integral control stops. Ideal for medical, kitchen & industrial installations.

Gross: 4,384 | Net: 4,172

Spares:
S-508-3
 Head part complete
S-508/1
 Lever
C-M24X1
 Aerator



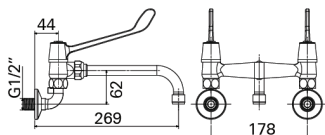
508
FEAWALEA-0GT0050
6002194030348

Medical mixer

Wall type, elbow action. Progressive temperature control, with integral inlet regulating valves. Adjustable inlet connections with wall flanges. Underslung aerated cast swivel outlet. 1/2" BSP male iron connection ends.

Spares:
S-508-3
 Head part complete
S-508/1
 Lever
C-M24X1
 Aerator

Gross: 4,301 | Net: 4,172



510-21
FEAWA2EA-0GT0050
6002194030355

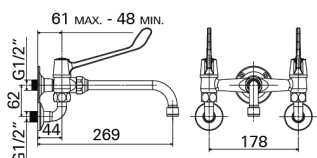
Medical mixer

Wall type, elbow action. With 1/4 turn ceramic disc head parts, bent inlet connections with wall flanges. Fixed straight aerated outlet. 1/2" BSP male iron connection ends.

Spares:
S-21-CLOCK
 Blue head part complete
S-21-1CLOCK
 Blue head part only
S-21-ANTI
 Red head part complete
S-21-2ANTI
 Red head part only
S-055-15
 Elbow connections
C-M22X1
 Aerator

Technical Details:
 Connections have 178mm fixed centres.

Gross: 1,176 | Net: 1,124



511-21
FEAWA3EA-0GT0050
6002194030362

Medical mixer

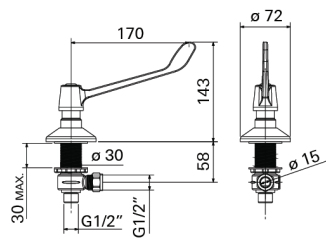
Wall type with re-inforcing back-plate, elbow action. With 1/4 turn ceramic disc head parts, bent inlet connections with wall flanges. Fixed straight aerated outlet. 1/2" BSP male iron connection ends.

Spares:
S-21-CLOCK
 Blue head part complete
S-21-1CLOCK
 Blue head part only
S-21-ANTI
 Red head part complete
S-21-2ANTI
 Red head part only
S-055-15
 Elbow connections
C-M22X1
 Aerator

Technical Details:
 Connections have 178mm fixed centres.

Gross: 2,075 | Net: 1,992





514-21B
FEASVAEA-4FT0050
6002194030379

Medical bottle washer

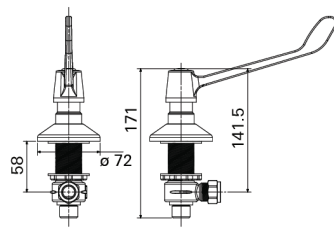
Elbow action. Deck mounted sidecock and flange with 1/4 turn ceramic disc head part and blue indice for cold water application. 1/2" BSP male iron outlet connection. 1/2" BSP male iron connection end.

Gross: 1,960 | Net: 1,882



Spares:
S-21-CLOCK
 Blue head part complete
S-21-1CLOCK
 Blue head part only

Medical



514-21R
FEASVAEA-5JT0050
6002194030386

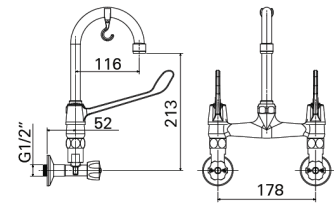
Medical bottle washer

Elbow action. Deck mounted sidecock and flange with 1/4 turn ceramic disc head part and red indice for hot water application. 1/2" BSP male iron outlet connection. 1/2" BSP male iron connection end.

Gross: 1,000 | Net: 0,955



Spares:
S-21-ANTI
 Red head part complete
S-21-2ANTI
 Red head part only



515/053232H21
FEAWA4EA-0GT0050
6002194030409

Medical mixer

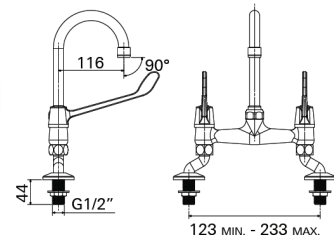
Wall type, elbow action. With 1/4 turn ceramic disc head parts, regulating valve inlet connections with wall flanges. Swan neck aerated swivel outlet with holder hook. 1/2" BSP male iron connection ends.

Technical Details:
 Connections have 178mm fixed centres.

Gross: 2,310 | Net: 2,218



Spares:
S-21-CLOCK
 Blue head part complete
S-21-1CLOCK
 Blue head part only
S-21-ANTI
 Red head part complete
S-21-2ANTI
 Red head part only
S-044
 Swan neck swivel outlet
232-10
 Angle regulating valves
C-M22X1
 Aerator



515/055-21
FEAWA5EA-0GT0050
6002194030416

Medical mixer

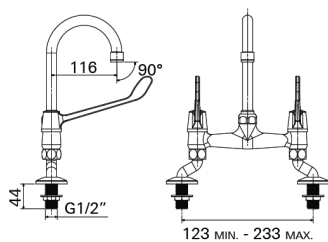
Wall type, elbow action. With 1/4 turn ceramic disc head parts, bent inlet connections with wall flanges. Swan neck aerated swivel outlet. 1/2" BSP male iron connection ends.

Technical Details:
 Connections have 178mm fixed centres.

Gross: 2,060 | Net: 1,978



Spares:
S-21-CLOCK
 Blue head part complete
S-21-1CLOCK
 Blue head part only
S-21-ANTI
 Red head part complete
S-21-2ANTI
 Red head part only
S-044
 Swan neck swivel outlet
S-055-15
 Elbow connections
C-M22X1
 Aerator



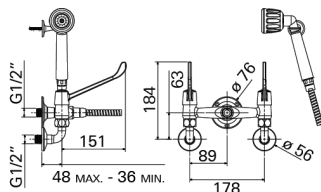
515-21
FEASNKEA-OGT0050
6002194030393

Medical mixer

Pillar type, elbow action. With 1/4 turn ceramic disc head parts, adjustable inlet connections with wall flanges. Swan neck aerated swivel outlet. 1/2" BSP male iron connection ends.

Gross: 2,150 | Net: 2,064

Spares:
S-21-CLOCK
 Blue head part complete
S-21-1CLOCK
 Blue head part only
S-21-ANTI
 Red head part complete
S-21-2ANTI
 Red head part only
S-044
 Swan neck swivel outlet
088-15
 Connection backnut
C-M22X1
 Aerator



518-21
FEAWA6EA-OGT0050
6002194030447

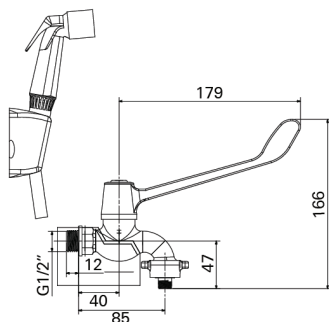
Medical mixer

Wall type with re-inforcing backplate, elbow action. With 1/4 turn ceramic disc head parts, bent inlet connections with wall flanges. With handshower, hose and handshower wall hook. 1/2" BSP male iron connection ends.

Technical Details:
 Connections have 178mm fixed centres.

Gross: 2,510 | Net: 2,410

Spares:
S-21-CLOCK
 Blue head part complete
S-21-1CLOCK
 Blue head part only
S-21-ANTI
 Red head part complete
S-21-2ANTI
 Red head part only
012W-ALPINE
 Hand shower
008/4C
 Hand shower hose
C-M22X1
 Aerator



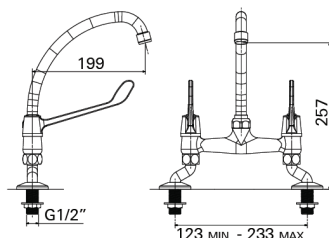
519-21
FEABIBEA-OGT0050
6002194030454

Medical bib tap

Elbow action. Trigger control hand-spray kit comprising of handspray, bonded high pressure hose with hose union wingnut and wall hook. With 1/4 turn ceramic disc head part. 1/2" BSP male iron connection end.

Gross: 1,020 | Net: 0,975

Spares:
S-21-CLOCK
 Blue head part complete
S-21-1CLOCK
 Blue head part only
27824SP
 Trigger spray and tube
28020
 Wall mounted hand shower holder



521-21
FEASNKE1-OGT0050
6002194030461

Medical mixer

Pillar type, elbow action. With 1/4 turn ceramic disc head parts, adjustable inlet connections with wall flanges. Aerated swivel outlet. 1/2" BSP male iron connection ends.

Gross: 2,260 | Net: 2,170

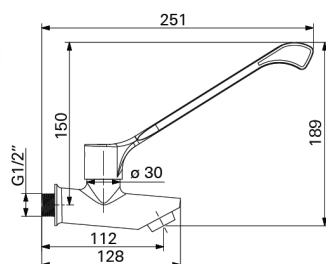
Spares:
S-21-CLOCK
 Blue head part complete
S-21-1CLOCK
 Blue head part only
S-21-ANTI
 Red head part complete
S-21-2ANTI
 Red head part only
S-041
 swivel outlet
088-15
 Connection backnut
C-M22X1
 Aerator



SINGLE LEVER MEDICAL RANGE



Medical

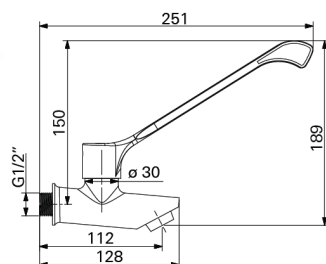


NM-500-21B
FBBAN1NM-4FT0050
6002194138204

Medical bib tap

Elbow action. With aerated outlet. 1/4 turn ceramic disc head part and blue indice for cold water application. 1/2" BSP male iron connection end.

Gross: 0,733 | Net: 0,697

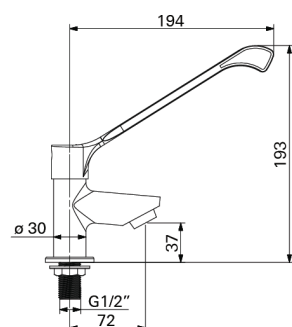


NM-500-21R
FBBAN1NM-5JT0050
6002194138211

Medical bib tap

Elbow action. With aerated outlet. 1/4 turn ceramic disc head part and red indice for hot water application. 1/2" BSP male iron connection end.

Gross: 0,733 | Net: 0,697

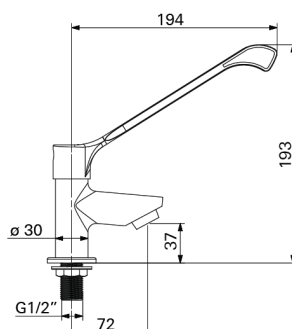


NM-502-21B
FEAPILNM-4FT0050
6002194138228

Medical pillar tap

Elbow action. With 1/4 turn ceramic disc head part, flanged backnut and blue indice for cold water application. 1/2" BSP male iron connection end.

Gross: 0,800 | Net: 0,760



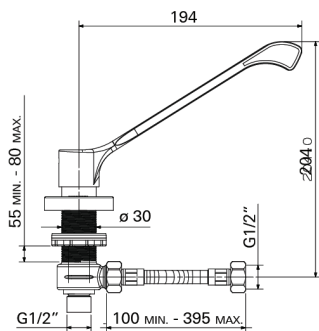
NM-502-21R
FEAPILNM-5JT0050
6002194138235

Medical pillar tap

Elbow action. With 1/4 turn ceramic disc head part, flanged backnut and red indice for hot water application. 1/2" BSP male iron connection end.

Gross: 0,800 | Net: 0,760



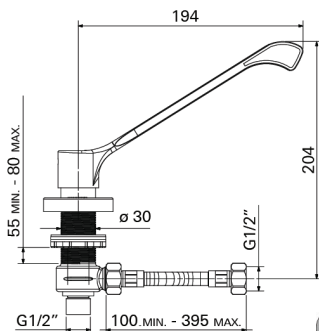


NM-514-21B
FEASVANM-4FT0050
6002194138242

Medical sidevalve

Elbow action. Deck mounted sidecock and flange with 350mm long 1/2" BSP female flexi connection tube. 1/4 turn ceramic disc head part and blue indice for cold water application. 1/2" BSP male iron connection end.

Gross: - | Net: -



NM-514-21R
FEASVANM-5JT0050
6002194138259

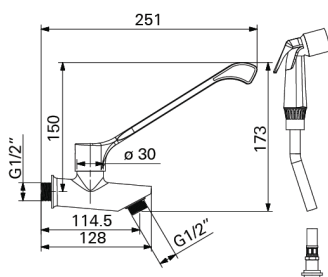
Medical sidevalve

Elbow action. Deck mounted sidecock and flange with 350mm long 1/2" BSP female flexi connection tube. 1/4 turn ceramic disc head part and red indice for hot water application. 1/2" BSP male iron connection end.

Gross: - | Net: -



Medical

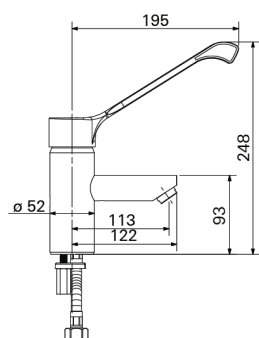


NM-519-21
FBBAN1NM-0GT0050
6002194138266

Medical bib tap

Elbow action. Trigger control handspray kit comprising of handspray, bonded high pressure hose with hose union wingnut and wall holder. With 1/4 turn ceramic disc head part. 1/2" BSP male iron connection end.

Gross: 1,100 | Net: 1,051

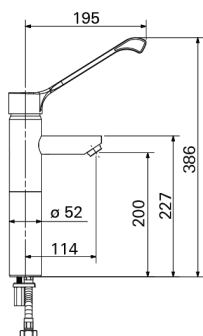


NM-851
FBN1D1NM-0GT0050
6002194138273

Medical basin mixer

Pillar type, elbow action. With ceramic disc progressive temperature control cartridge. Aerated outlet. 1/2" BSP female connection ends.

Gross: 2,300 | Net: 2,208



NM-851R
FBR1D1NM-0GT0050
6002194138297

Medical basin mixer

Raised pillar type, elbow action. With ceramic disc progressive temperature control cartridge. Aerated outlet. 1/2" BSP female connection ends.

Gross: 4,600 | Net: 4,462



COBRA MEDICAL RANGE

ADHERENCE TO STANDARDS

The Cobra medical offering is split into two ranges. The conventional range that has been on the South African market for over 30 years and the new range to keep up with the ever-changing trends within the healthcare market.

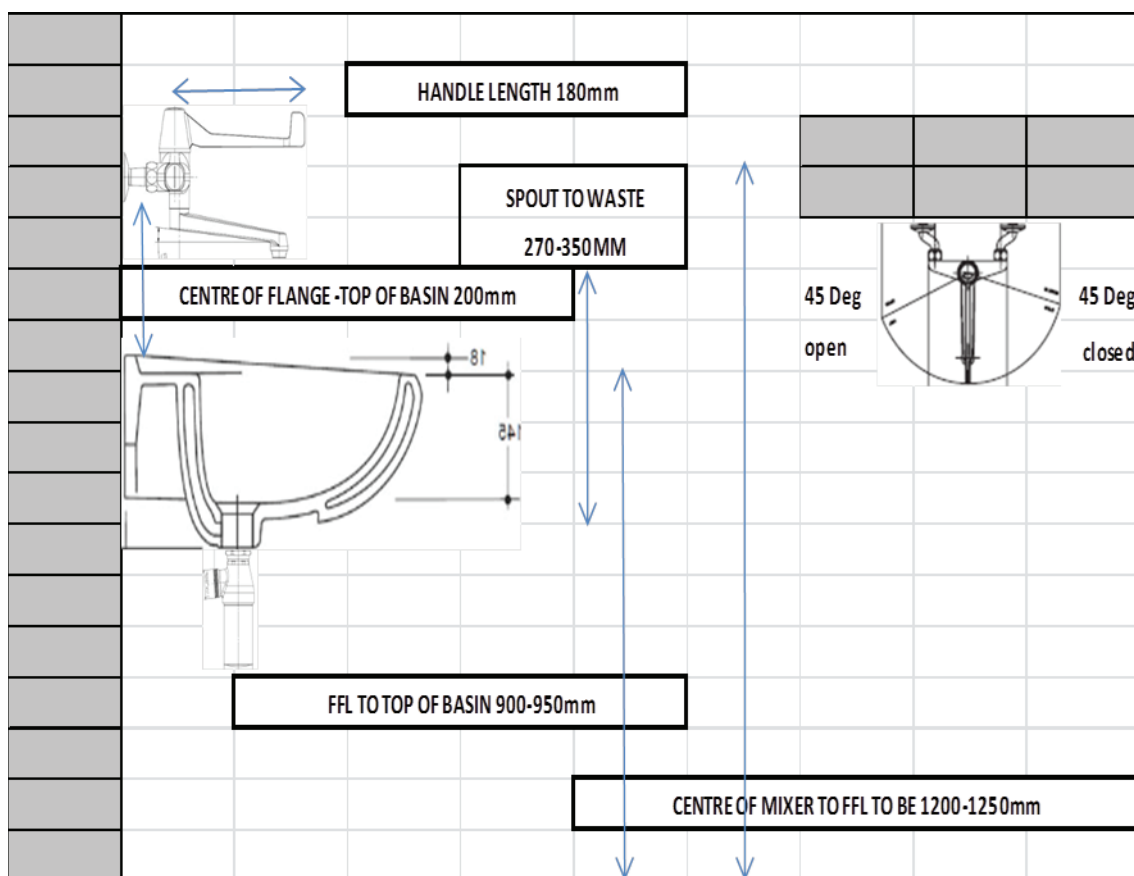
Both ranges conform to the minimum standards as depicted in the catalogue, and also conform to the minimum standards of the South African Department of Health and the newly formed government organisation called Infection Control, hailing from Kwazulu Natal.

The minimum specification for the length of the handle is still at 180mm.

Our medical ranges fall within the ambit of the Department of Trade and Industry's designation law of 70% locally manufactured product.

Healthcare clinical basin specifications have changed over the years and our medical products have kept up with requirements. Both our new and conventional medical offerings form part of the Infection Control and Department of Health specification for both the public and private healthcare sector.

The typical installation is as follows:



Our Cobra medical portfolio also boasts a range of anti-microbial products which is approved by the Copper Development Association and has a Cu⁺ symbol together with the necessary SABS mark situated on the body.

Essentially this range is manufactured to order only, and is manufactured from DZR brass without nickel and chrome plating. It is supplied as polished brass.

The surfaces of copper and its alloys, such as brass and bronze, are antimicrobial. They have an inherent ability to kill a wide range of harmful microbes relatively rapidly – often within two hours or less – and with a high degree of efficiency.

HOSPITAL & LABORATORY



02

HOSPITAL & LABORATORY

HygiaBoxed C/W fittings

Sola 510

Sola 630

Lab sink 450

Lab sink 600

Drip sink

Slophopper

13

15

15

16

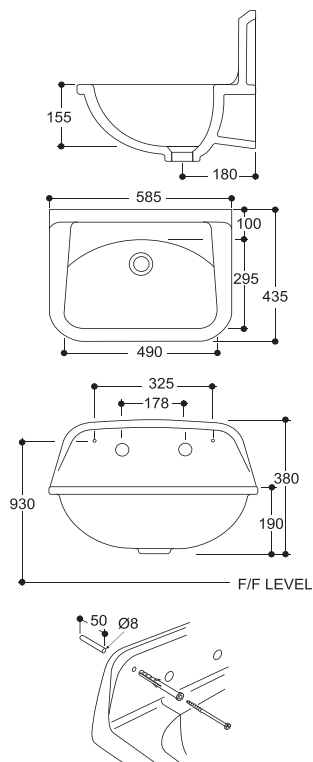
16

17

17

18





HYGIA BOXED C/W FITTINGS MEDICAL BASIN

703600WH
CHYBABFI-2CO
6005826060836

585x435mm wall hung medical basin with 2 tapholes, supplied with 1/4 turn wrist action mixer, CP waste, standing overflow tube, 2 fixing screws, plugs and CP caps.

OPTIONAL ITEMS

1. 308
32mm basin waste, unslotted
2. 340
CP Bottle trap

SPARES FOR PRODUCT

1. 703602WH
Hygia basin
2. 515/055H-21
Medical mixer
3. 8630Z000
CP standing overflow tube
4. 8513Z000
Hygia fixing screw set

INSTALLATION INSTRUCTIONS

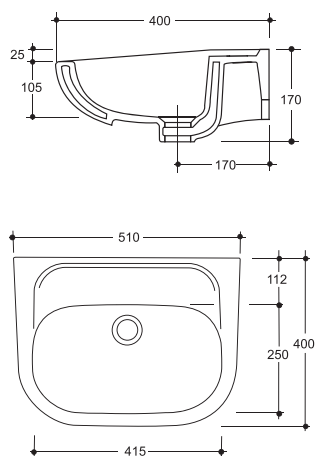
1. Determine position where basin is to be installed.
2. Mark position of holes to be drilled for fixing screws.
3. Drill holes to correct size and depth.
4. Place basin against holes for push-through installation for concrete, solid bricks and hollow blocks.
5. Insert screws and tighten with number 10 hexagonal spanner.
6. Press the c.p. caps onto head of screw and over the exposed section of the plug

up against basin splashback.

NOTE: Maximum load bearing capacity of the fixing is achieved only if the screw projects through the plug tip by at least 1 x screw diameter, and the plug expands in the wall with its whole anchoring depth. Tiles and plaster are considered to be non-load bearing.

SPECIAL RECOMMENDATION

Always use silicone sealant or equivalent between basin and finished wall surface area for secure and neat installation.



SOLA 510 MEDICAL BASIN

703700WH
CS051JNN-2C00413
6005826002461

510x400mm wall hung semi-rectangular medical basin with no tapholes, integrated overflow or chainstay hole.

OPTIONAL ITEMS

1. 8448Z000
10mm fixing bolt set
2. 8131Z300
Sola/Weaver basin bracket
3. 308
32mm basin waste unslotted
4. 340
CP Bottle trap
5. 8630Z000
CP standing overflow tube

INSTALLATION INSTRUCTIONS

The basin may be installed by alternative methods:

1. Bolted to the wall using two 10 mm bolts (code 8448Z0).
- or
2. Using a concealed wall bracket (code 8131Z3), and three 10 mm bolts (code 8448Z0).

Option 1:

Place basin level against finished wall surface at correct height and mark fixing hole positions. Remove basin and drill holes. Attach bolts to wall, fit basin, and

secure. NOTE: Do not over tighten.

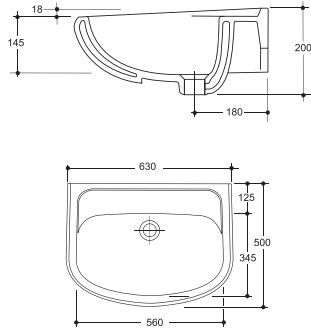
Option 2:

Place basin level against finished wall surface at correct height and mark fixing hole positions. Remove basin and drill holes. Loosely attach concealed bracket to basin waste. Attach bolts to wall, fit basin and secure bracket to basin waste.

SPECIAL RECOMMENDATION

Always use silicone sealant or equivalent between basin and finished wall surface area for secure and neat installation.





SOLA 630 MEDICAL BASIN

702800WH
CS063JNN-2C00413
6005826069037

630x500mm wall hung rectangular medical basin with no tapholes, integrated overflow or chainstay hole.

OPTIONAL ITEMS

1. **8448Z000**
10mm fixing bolt set
2. **8131Z300**
Sola/Weaver basin bracket
3. **308**
32mm basin waste unslotted
4. **340**
CP Bottle trap
5. **8630Z000**
CP standing overflow tube

INSTALLATION INSTRUCTIONS

The basin may be installed by alternative methods:

1. Bolted to the wall using two 10 mm bolts (code 8448Z0).
- or
2. Using a concealed wall bracket (code 8131Z3), and three 10 mm bolts (code 8448Z0).

Option 1:

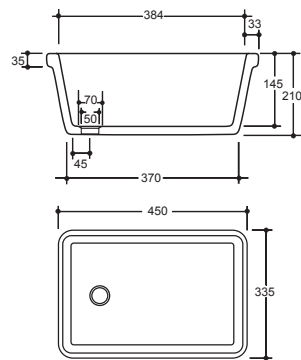
Place basin level against finished wall surface at correct height and mark fixing hole positions. Remove basin and drill holes. Attach bolts to wall, fit basin, and secure. NOTE: Do not over tighten.

Option 2:

Place basin level against finished wall surface at correct height and mark fixing hole positions. Remove basin and drill holes. Loosely attach concealed bracket to basin waste. Attach bolts to wall, fit basin and secure bracket to basin waste.

SPECIAL RECOMMENDATION

Always use silicone sealant or equivalent between basin and finished wall surface area for secure and neat installation.



LAB SINK 450 LABORATORY SINK

234501WH
CLA43J43-2C00344
6005826070385

450 x 335 x 180mm rectangular sink with centre end waste outlet and no integrated overflow.

OPTIONAL ITEMS

1. **8790Z000**
38mm Acid resistant waste
2. **8794Z000**
32mm CP waste
3. **8102Z000**
Wall hung Sink brackets x2
4. **8109Z000**
Under mount sink brackets x2

INSTALLATION INSTRUCTIONS

Sink may be installed by alternative methods:

1. Fitted to the wall on two semi-concealed brackets (code 8102Z000)
- or
2. Fixed underneath a slab using two adjustable underslung brackets (code 8109Z000)

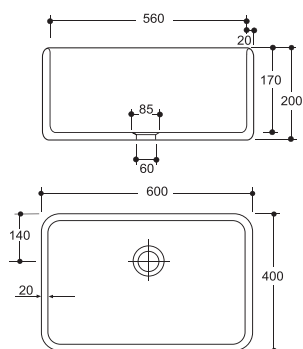
Option 1:

Position brackets and mark fixing holes. Fix brackets to wall and place sink into position. Always use silicone sealant or equivalent between the brackets and the underside of the sink for a secure and neat installation.

Option 2:

Position sink under rectangular cut-out of slab ensuring that overhang is even all round (± 10 mm). With sink correctly positioned, mark hole positions of brackets. Remove sink and drill previously marked bracket screw holes. Attach bracket to slab. Apply a liberal layer of silicone sealant or equivalent to contact area of sink rim and slab. Tighten securing stud so as to ensure a watertight seal between sink and underside of slab. Wipe off excess sealant and allow to dry.





LAB SINK 600 LABORATORY SINK

236100WH
CLA60JNN-2C00401
6005826002447

600mm x 400mm x 200mm rectangular sink with centre back waste outlet and no integrated overflow.

OPTIONAL ITEMS

1. 8791Z000
38mm Acid resistant waste
2. 8783Z000
38mm CP waste
3. 8102Z000
Wall hung Sink brackets x2
4. 8109Z000
Under mount sink brackets x2

INSTALLATION INSTRUCTIONS

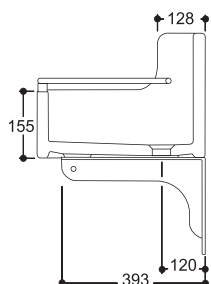
Sink may be installed by alternative methods:

1. Fitted to the wall on two semi-concealed brackets [code8102Z000] or
2. Fixed underneath a slab using two adjustable underslung brackets (code 8109Z000)

Option 1:
Position brackets and mark fixing holes. Fix brackets to wall and place sink into position. Always use silicone sealant or equivalent between the brackets and the

underside of the sink for a secure and neat installation.

Option 2:
Position sink under rectangular cut-out of slab ensuring that overhang is even all round (± 10 mm). With sink correctly positioned, mark hole positions of brackets. Remove sink and drill previously marked bracket screw holes. Attach bracket to slab. Apply a liberal layer of silicone sealant or equivalent to contact area of sink rim and slab. Tighten securing stud so as to ensure a watertight seal between sink and underside of slab. Wipe off excess sealant and allow to dry.



DRIP SINK DRIP SINK

238013WH
CDR53053-2C0
6005826061024

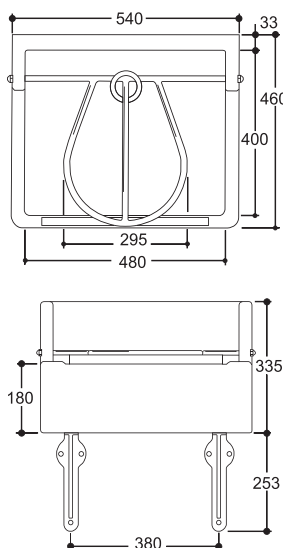
540mm x 460mm x 180mm rectangular Drip Sink with resin pad and CP bucket grating with rubber stops.

OPTIONAL ITEMS

1. 8783Z000
38mm CP waste
2. 8102Z000
Wall hung Sink brackets x2

SPARES FOR PRODUCT

1. 238000WH
Drip Sink
2. 2380Z000
Drip sink fitting



INSTALLATION INSTRUCTIONS

Position brackets and mark for fixing holes. Fix brackets to wall and place sink into position. Always use silicone sealant or equivalent between the brackets and the underside of the sink for a secure and neat installation. Complete all plumbing connections.

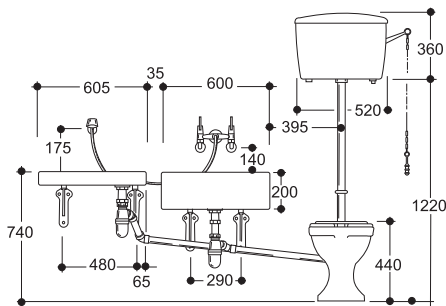
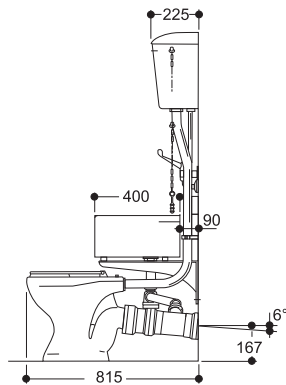




SLOP HOPPER SLOPHOPPER COMBINATION

751599WH
CKLPAJNN2C00413B
6005826018035

405mm x 530mm x 360mm 104° outlet pan, complete with resin pads, CP bucket grating and PVC junction pan connector, rectangular 600mmx400mmx200mm sink with 38mm CP waste, PVC bottle trap and waste pipe, 605mmx400mm Drainer, 11L high level cistern with fittings and chain.



OPTIONAL ITEMS

1. **518-21**
CP 13mm mixer

SPARES FOR PRODUCT

1. **751500WH**
Slophopper pan with grid
2. **2510Z000**
Hospital grid
3. **7102HLWH**
Protea High Level Cistern
4. **236100WH**
Lab sink
5. **146100WH**
Drainer
6. **8106Z000**
Hospital Brackets x4
7. **8123Z000**
Levelling plates x2
8. **8124Z000**
Outlet levelling plates x2
9. **1710Z200**
CP flushpipe and holderbat

INSTALLATION INSTRUCTIONS

1. Ensure water connections are available for mixer, correctly positioned.
2. Place slophopper into position and mark hole positions. Remove slophopper and drill holes. Place slophopper back into position, fix screw to the floor and secure.
3. Position brackets and mark fixing holes for sink and drainer.
4. Fix brackets to wall and attach levelling plates, then position sink and drainer onto brackets.
5. Always use silicone sealant or equivalent between the brackets and the underside of the ware for a secure and neat installation.
6. Assemble the cistern, determine the height and fix to wall. Cut the flushpipe to length and connect it to the elbow with Pratley Steel or equivalent, then connect the flushpipe from the cistern to the pan.
7. Cut sink waste to length and connect.
8. Complete all plumbing connections, test flush, ensure that correct water level has been set.
9. Always use silicone sealant or equivalent between the pan and the finished floor and wall surfaces for a secure and neat installation.
NOTE: The warranty will not apply to any product installed with cement.



20 Wright Street,
Factoria,
Krugersdorp, 1739
South Africa



National Call Centre Number: +27 (0) 861 21 21 21

ONLINE PLATFORMS

Visit our websites and find an office/dealer/distributor closest to you.

Websites:

<http://www.cobra.co.za/>

<http://www.lixil.co.za/>

Social Media:



- @Cobrataps



- @CobraWatertechSA



- @VaalSanitaryware

Cobra and Vaal have policies of continuous product development and advancements and therefore reserve the right to modify product specifications accordingly.

